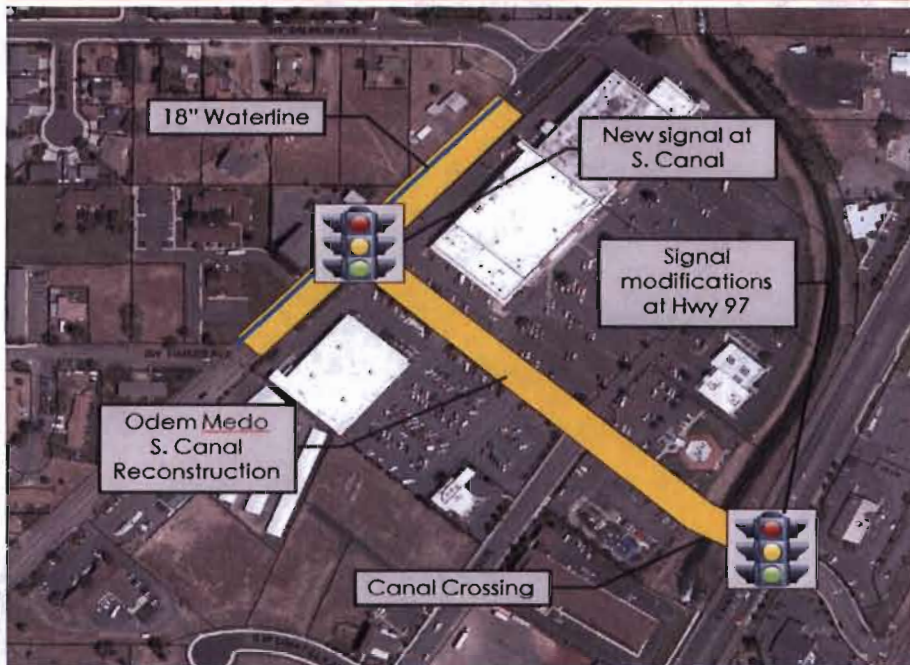


CITY OF REDMOND

ODEM MEDO/S. CANAL STREET IMPROVEMENTS



**Contractor: High Desert
Aggregate & Paving**

Bid Price: \$1,356,398

**Funding : Transportation
Capital Improvement and
System Development , Water
and Urban Renewal Funds**

**Construction Start : 1/04/10
Completion: 6/1710**

Reasons for the project:

The narrow bridge crossing the canal has long been a bottleneck for traffic on Odem Medo Road from S. Highway 97 to S. Canal Blvd.

A traffic signal is needed at the Odem Medo/S. Canal intersection.

An important 18" water main runs cross-country through numerous properties and is not easily accessed for maintenance and repair.

Revisions to the traffic signal and lanes at S. Highway 97/Odem Medo Road are necessary to accommodate traffic volumes.

Contact Info:

Steve Wilson, Civil Engineer 2 (504-2007)
steve@ci.redmond.or.us
Mike Caccavano, City Engineer (504-2011)
mikec@ci.redmond.or.us

City of Redmond
Engineering Department
716 SW Evergreen
Redmond, OR 97756



PROJECT DESCRIPTION

Odem Medo Road will be reconstructed between S. Highway 97 and S. Canal Blvd. S. Canal Blvd. will be reconstructed between SW Timber and SW Salmon.

Odem Medo will include two travel lanes, a center turn lane, bike lanes, new sidewalks and ADA ramps. Driveways will be modified to reduce conflicts for turning traffic. The road will be widened to 4 lanes at S. Highway 97 with provisions for a future 5th lane.

A new traffic signal will be provided at the S. Canal Blvd. /Odem Medo Road intersection and the traffic signal at S. Highway 97/Odem Medo will be modified to serve the new lane configuration including a right turn lane from southbound Highway 97 to Odem Medo Road.

Work will start with the new waterline in S. Canal at the beginning of January. Replacing the canal bridge will follow starting in mid-January. Odem Medo traffic will be detoured to S. Canal at Veterans Way and Yew Avenue. Business access will be available from S. Highway 97 at the entrance to Big 5 and Carl's Jr. and from S. Canal Blvd.



PROJECT AREA

Detour at Veterans Way to S. Canal

S. Canal Blvd.

Odem-Mledo Road

S. Highway 97

Business Access

Detour at Yew Avenue to S. Canal

