
Construction Update
Major Projects
City Council
February 14, 2012



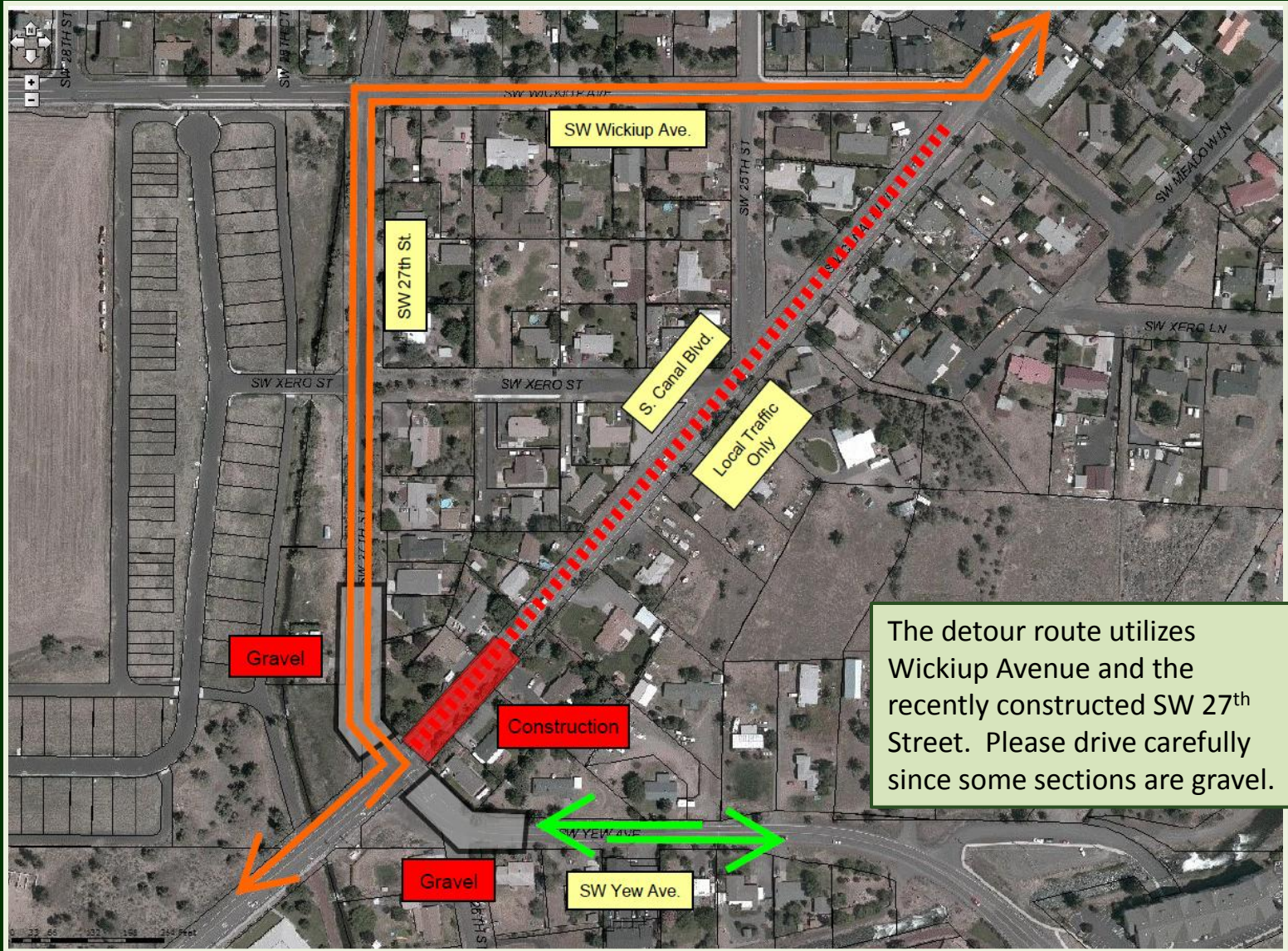
SW 27th St. Reconstruction



Taylor NW continues to work near the SW 27th/Yew/Canal roundabout. Currently S. Canal is closed north of the intersection for curb, utility and storm drain installation.



SW 27th St. Reconstruction



The detour route utilizes Wickiup Avenue and the recently constructed SW 27th Street. Please drive carefully since some sections are gravel.



Dry Canyon Trail – Pumice Stairs



Key Constructors has poured the concrete stairs at SW Pumice Avenue. Work is on hold until the paving plants reopen in March or April.

